

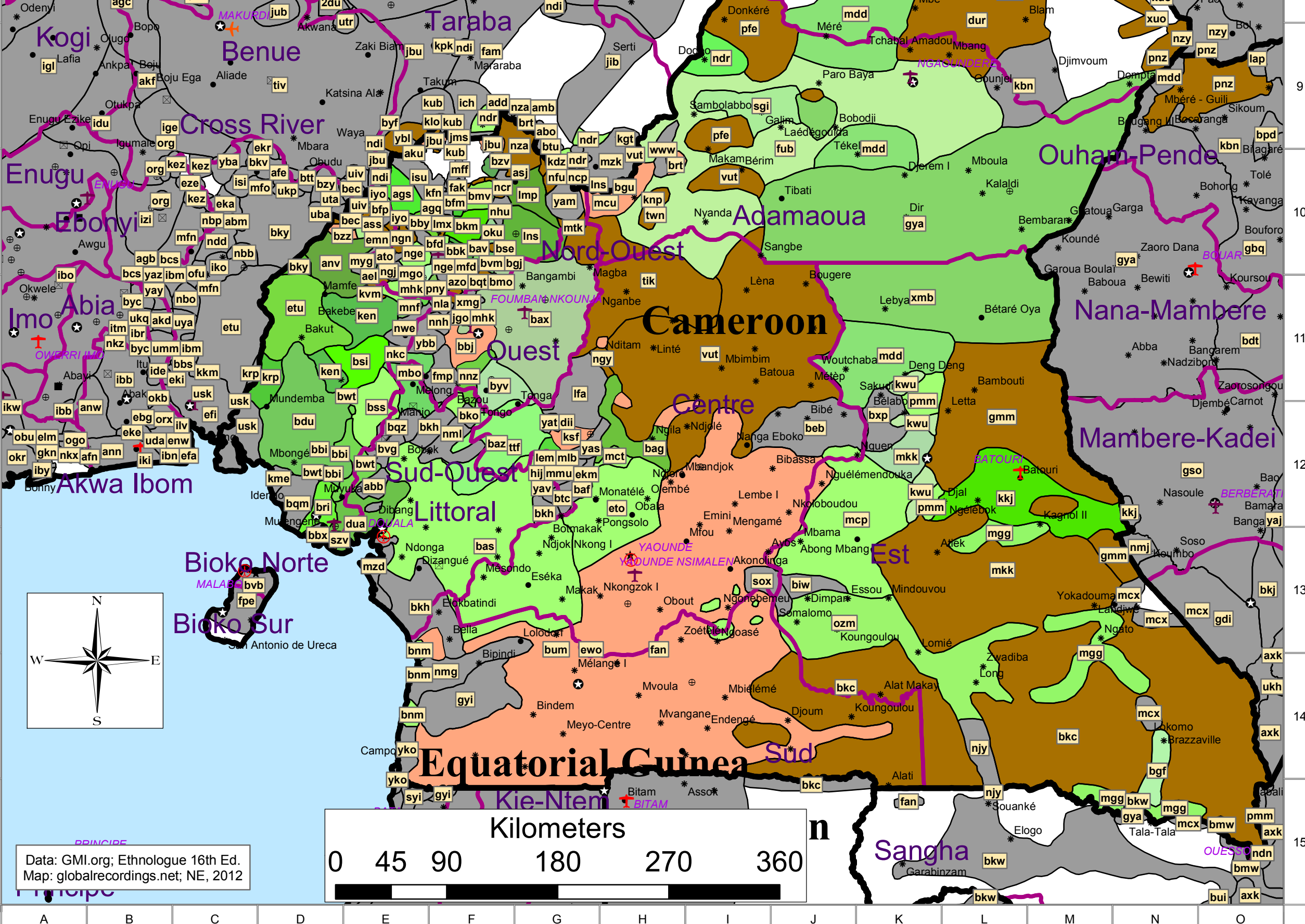
Recorded P#1,2, & 3 Languages of Cameroon

- Small city (10k and larger)
 - * Populated place
 - National/provincial capitals**
 - or population > 50,000 rank**
 - ★ Capitals
 - ⊙ Provincial capitals
 - Population > 500,000
 - ▣ Population > 100,000
 - ⊖ Population > 50,000
 - ▭ Provinces
 - Uninhabited/Unknown
- Priority 1 Recorded Languages**
- aal-CMR, Afade
 - bbj-CMR, Ghomala: Ghom.Central#10210
 - bdm-CMR, Buduma
 - brt-CMR, Bitare
 - bzz-CMR, Evant
 - dkx-CMR, Mazagway
 - ewo-CMR, Ewondo
 - fil-CMR, Fali, North
 - fuv-CMR, Fulfulde, Kano-Katsina-Bororro
 - giz-CMR, Giziga, South
 - hna-CMR, Mina
 - jbu-CMR, Jukun Takum
 - knc-CMR, Kanuri, Central
 - kot-CMR, Lagwan
 - ksf-CMR, Bafia
 - mcu-CMR, Mambila, Cameroon
 - mfi-CMR, Wandala
 - shu-CMR, Arabic, Shuwa
 - zuy-CMR, Zumaya
- Priority 2 Recorded Languages**
- add-CMR, Dzodinka
 - bbq-CMR, Bamali
 - bbw-CMR, Baba
 - bec-CMR, Ioeve-Maci
 - bfj-CMR, Bafanji
 - bgj-CMR, Bangolan
 - bhs-CMR, Buwal
 - bkc-CMR, Baka
 - bkw-CMR, Bekwil

- bnz-CMR, Beezen
- bse-CMR, Wushi
- bxs-CMR, Busam
- bzv-CMR, Bebe
- ckx-CMR, Caka
- cug-CMR, Cung
- dbq-CMR, Daba
- dme-CMR, Dugwor
- dow-CMR, Doyayo
- dur-CMR, Dii
- emn-CMR, Eman
- fak-CMR, Fang
- fai-CMR, Fali, South
- gde-CMR, Gude
- gmm-CMR, Gbaya-Mbodomo
- gou-CMR, Gavar
- kdz-CMR, Kwaja
- kmp-CMR, Gimme
- kmy-CMR, Koma
- knp-CMR, Kwanja
- kvj-CMR, Psikye
- kvm-CMR, Kendem
- kzr-CMR, Karang
- kzr-CMR, Mbum: East#6058
- lmx-CMR, Laimbue
- maf-CMR, Mafa
- mfi-CMR, Mefele
- mfk-CMR, Mofu, North
- mij-CMR, Abar
- mtk-CMR, Mbo
- mg-CMR, Musgu
- muo-CMR, Nyong
- mxu-CMR, Mada
- ncr-CMR, Ncane
- ngn-CMR, Ngwo
- ngs-CMR, Gvoko
- ngy-CMR, Tibe
- nza-CMR, Mbembe, Tigon
- pfe-CMR, Peere
- pnz-CAF, Pana
- pnz-CMR, Pana
- szv-CMR, Isu
- tik-CMR, Tikar
- vut-CMR, Vute
- wes-CMR, Pidgin Cameroon #2619
- ybi-CMR, Yukuben
- ybi-NGA, Yukuben

Languages

Priority 2 Recorded Languages	Priority 3 Recorded Languages
add-CMR, Dzodinka	abn-CMR, Baniwa
bbq-CMR, Bamali	abf-CMR, Babar-Babing
bbw-CMR, Baba	abg-CMR, Baka
bec-CMR, Ioeve-Maci	abk-CMR, Baka
bfj-CMR, Bafanji	abm-CMR, Baka
bgj-CMR, Bangolan	abn-CMR, Baka
bhs-CMR, Buwal	abp-CMR, Baka
bkc-CMR, Baka	abq-CMR, Baka
bkw-CMR, Bekwil	abr-CMR, Baka
	abs-CMR, Baka
	abt-CMR, Baka
	abu-CMR, Baka
	abv-CMR, Baka
	abw-CMR, Baka
	abx-CMR, Baka
	aby-CMR, Baka
	abz-CMR, Baka
	aba-CMR, Baka
	abb-CMR, Baka
	abc-CMR, Baka
	abd-CMR, Baka
	abe-CMR, Baka
	abf-CMR, Baka
	abg-CMR, Baka
	abh-CMR, Baka
	abi-CMR, Baka
	abj-CMR, Baka
	abk-CMR, Baka
	abl-CMR, Baka
	abm-CMR, Baka
	abn-CMR, Baka
	abo-CMR, Baka
	abp-CMR, Baka
	abq-CMR, Baka
	abr-CMR, Baka
	abs-CMR, Baka
	abt-CMR, Baka
	abu-CMR, Baka
	abv-CMR, Baka
	abw-CMR, Baka
	abx-CMR, Baka
	aby-CMR, Baka
	abz-CMR, Baka
	aba-CMR, Baka
	abb-CMR, Baka
	abc-CMR, Baka
	abd-CMR, Baka
	abe-CMR, Baka
	abf-CMR, Baka
	abg-CMR, Baka
	abh-CMR, Baka
	abi-CMR, Baka
	abj-CMR, Baka
	abk-CMR, Baka
	abl-CMR, Baka
	abm-CMR, Baka
	abn-CMR, Baka
	abo-CMR, Baka
	abp-CMR, Baka
	abq-CMR, Baka
	abr-CMR, Baka
	abs-CMR, Baka
	abt-CMR, Baka
	abu-CMR, Baka
	abv-CMR, Baka
	abw-CMR, Baka
	abx-CMR, Baka
	aby-CMR, Baka
	abz-CMR, Baka



Data: GML.org; Ethnologue 16th Ed.
Map: globalrecordings.net; NE, 2012