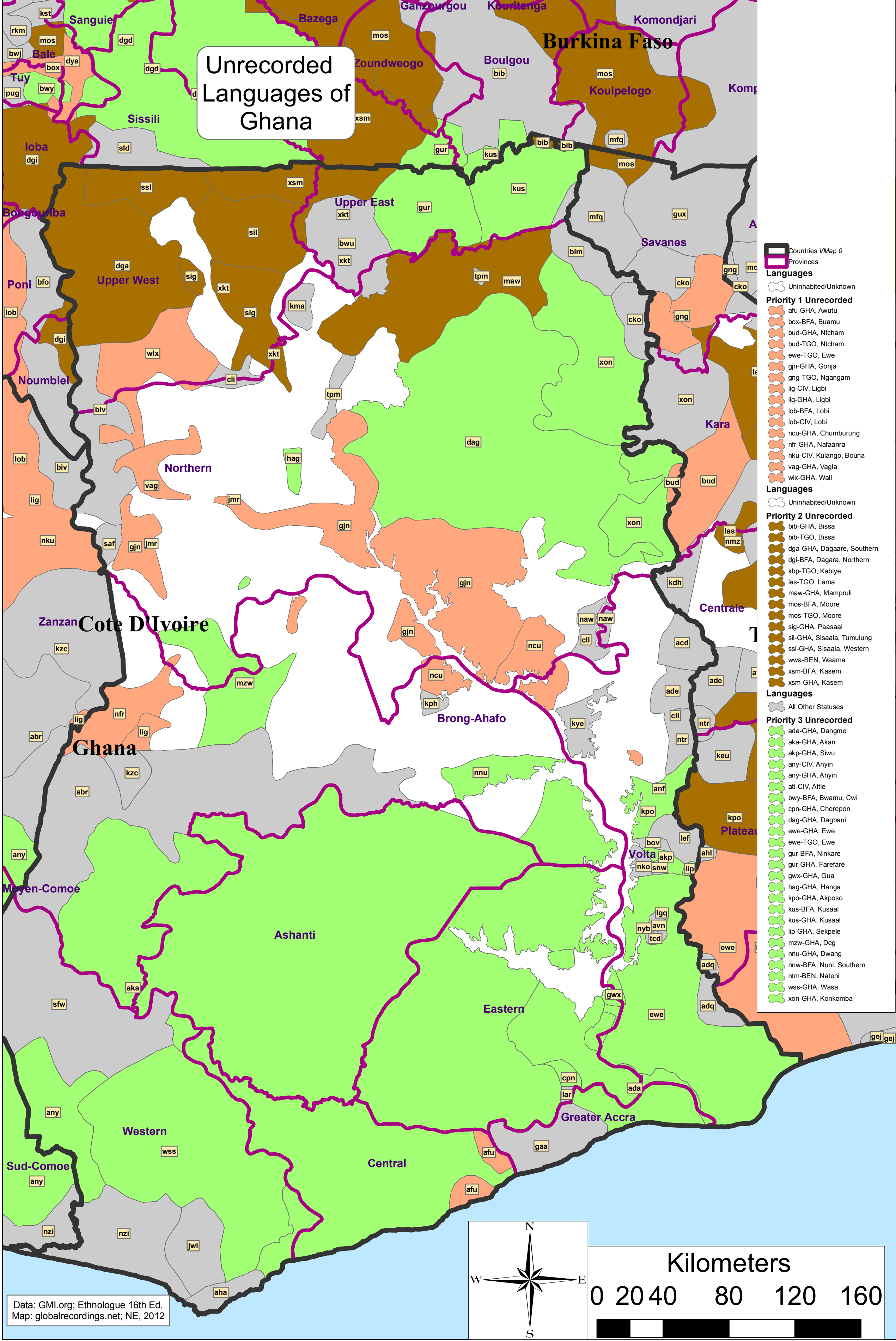


Unrecorded Languages of Ghana



- Countries VMap 0**
Provinces
Languages
 Uninhabited/Unknown
- Priority 1 Unrecorded**
 afu-GHA, Awutu
 box-BFA, Buamu
 bud-GHA, Ntcham
 bud-TGO, Ntcham
 ewe-TGO, Ewe
 gjn-GHA, Gonja
 gng-TGO, Ngangam
 lig-CIV, Ligbi
 lig-GHA, Ligbi
 lob-BFA, Lobi
 lob-CIV, Lobi
 ncu-GHA, Chumburung
 nfr-GHA, Nafaanra
 nku-CIV, Kulango, Bouna
 vag-GHA, Vagla
 wx-GHA, Wali
Languages
 Uninhabited/Unknown
- Priority 2 Unrecorded**
 bib-GHA, Bissa
 bib-TGO, Bissa
 dga-GHA, Dagaare, Southern
 dgi-BFA, Dagara, Northern
 kbp-TGO, Kabiye
 las-TGO, Lama
 maw-GHA, Mampruli
 mos-BFA, Moore
 mos-TGO, Moore
 sig-GHA, Paasaal
 sil-GHA, Sisaala, Tumulung
 ssi-GHA, Sisaala, Western
 wwa-BEN, Waama
 xsm-BFA, Kasem
 xsm-GHA, Kasem
Languages
 All Other Statuses
- Priority 3 Unrecorded**
 ada-GHA, Dangme
 aka-GHA, Akan
 akp-GHA, Siwu
 any-CIV, Anyin
 any-GHA, Anyin
 ati-CIV, Attie
 bwy-BFA, Bwamu, Cwi
 cpn-GHA, Cherepon
 dag-GHA, Dagbani
 ewe-GHA, Ewe
 ewe-TGO, Ewe
 gur-BFA, Ninkare
 gur-GHA, Farefare
 gw-x-GHA, Gua
 hag-GHA, Hanga
 kpo-GHA, Akposo
 kus-BFA, Kusaal
 kus-GHA, Kusaal
 lip-GHA, Sekpele
 mzw-GHA, Deg
 nnu-GHA, Dwang
 nnw-BFA, Nuni, Southern
 ntm-BEN, Nateni
 wss-GHA, Wasa
 xon-GHA, Konkomba

Data: GMI.org; Ethnologue 16th Ed.
 Map: globalrecordings.net; NE, 2012

