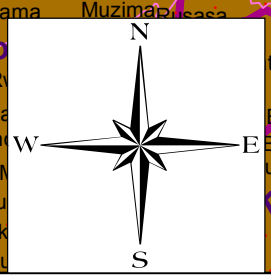
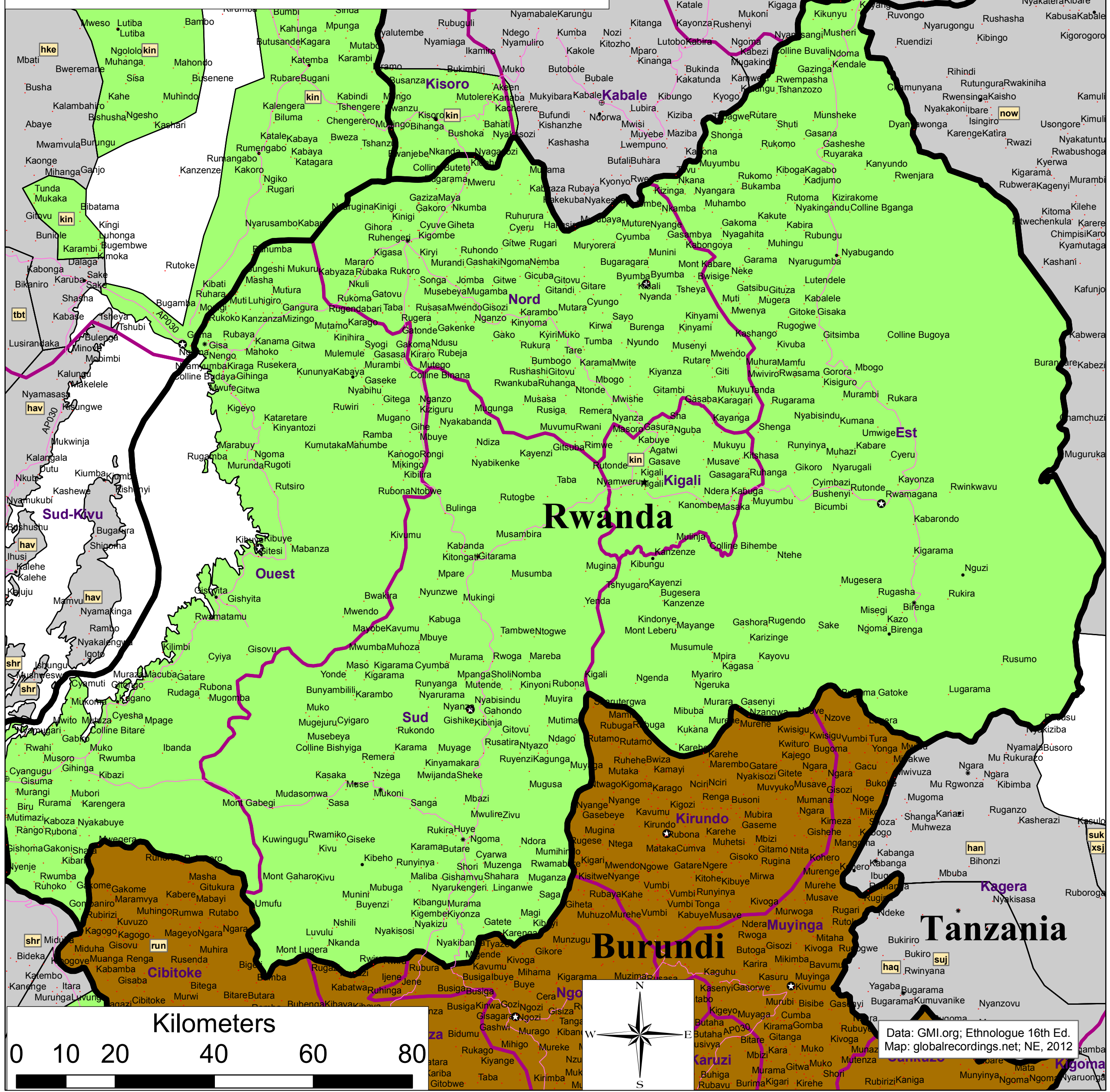


Recorded P#1,2, & 3 Languages of Rwanda

- Settlements (Various Sizes)
- Small city
 - Populated place
- National/provincial capitals or population > 50,000**
- ★ Capitals
 - ⊙ Provincial capitals
 - Population > 500,000
 - ⊠ Population > 100,000
 - ⊕ Population > 50,000

- Roads**
- Description**
- ↗ With Median
 - ↗ Primary Route, Operational
 - ↗ Primary Route, Under Construction
 - ↗ Secondary Route, Operational, Unknown
 - ↗ Secondary Route, Doubtful, Unknown
 - ↗ Unexamined/Unsurveyed
- Languages**
- ⊕ Uninhabited/Unknown
- Recorded Priority 2 Languages**
- 👉 ISO Code-Country Code, Language
 - 👉 run-BDI, Rundi
- Languages**
- ⊕ Unrecorded/Other Country Language
- Recorded Priority 3 Languages**
- 👉 ISO Code-Country Code, Language
 - 👉 kin-COD, Rwanda
 - 👉 kin-RWA, Rwanda
 - 👉 kin-UGA, Rwanda



Data: GMI.org; Ethnologue 16th Ed.
Map: globalrecordings.net; NE, 2012