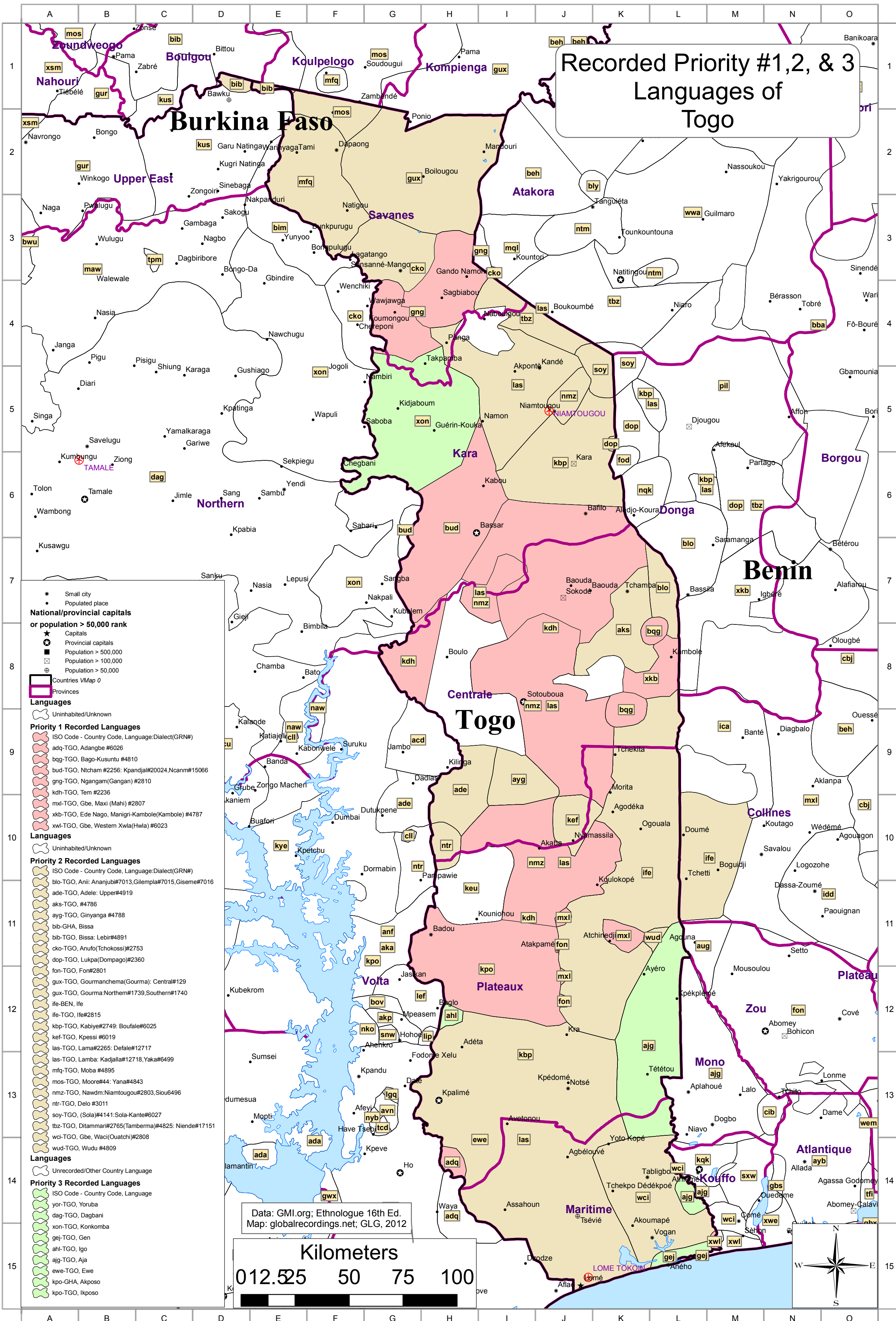


Recorded Priority #1, 2, & 3 Languages of Togo



- * Small city
 • Populated place
 ★ National/provincial capitals
 or population > 50,000 rank
 ● Provincial capitals
 ■ Population > 500,000
 □ Population > 100,000
 ⊕ Population > 50,000
 Countries VMap 0
 Provinces
 Languages
 Uninhabited/Unknown
- Priority 1 Recorded Languages**
 ISO Code - Country Code, Language:Dialect(GRN#)
 adq-TGO, Adangbe #6026
 bag-TGO, Bago-Kusuntu #4810
 bud-TGO, Ntcham #2256; Kpandjal#20024.Ncanm#15066
 gng-TGO, Ngangam(Gangan) #2810
 kdh-TGO, Tem #2236
 mxl-TGO, Gbe, Maxi (Mahi) #2807
 xkb-TGO, Ede Nago, Manigri-Kambole(Kambole) #4787
 xwl-TGO, Gbe, Western Xwla(Hwla) #6023
- Priority 2 Recorded Languages**
 ISO Code - Country Code, Language:Dialect(GRN#)
 blo-TGO, Anli: Ananjubi#7013,Gilempla#7015,Giseme#7016
 ade-TGO, Adele: Upper#4919
 aks-TGO, #4786
 ayy-TGO, Ginyanga #4788
 bib-GHA, Bissa
 bib-TGO, Bissa: Lebir#4891
 cko-TGO, Anufo(Tchokossi)#2753
 dop-TGO, Lukpa(Dompago)#2360
 fon-TGO, Fon#2801
 gux-TGO, Gourmanchema(Gourma): Central#129
 gux-TGO, Gourma:Northern#1739,Southern#1740
 ife-BEN, Ife
 ife-TGO, Ife#2815
 kbp-TGO, Kabiye#2749; Boufale#6025
 kef-TGO, Kpessi #6019
 las-TGO, Lama#2265; Defale#12717
 las-TGO, Lama: Kadjal#12718,Yaka#6499
 mlq-TGO, Moba #4895
 mos-TGO, Moore#44; Yana#4843
 nmz-TGO, Nawdm:Niamtougou#2803,Siou#496
 ntr-TGO, Delo #3011
 soy-TGO, (Sola)#4141;Sola-Kante#6027
 tbz-TGO, Ditammar#2765(Tamberma)#4825; Niende#17151
 wci-TGO, Gbe, Wacii(Ouatchi)#2808
 wud-TGO, Wudu #4809
- Priority 3 Recorded Languages**
 ISO Code - Country Code, Language
 yor-TGO, Yoruba
 dag-TGO, Dagbani
 xon-TGO, Konkomba
 gej-TGO, Gen
 ahl-TGO, Igo
 ajg-TGO, Aja
 ewe-TGO, Ewe
 kpo-GHA, Akposo
 kpo-TGO, Ikposo
- Unrecorded/Other Country Language

Data: GMI.org; Ethnologue 16th Ed.
 Map: globalrecordings.net; GLG, 2012

Kilometers
 0 12.5 25 50 75 100

